

# ISOLUTE® Si-Thiol

## Metal Scavenger

### Key Facts



Stoichiometric



Shelf Life

Capacity  
(mmol/g)

BSE/TSE



Scalable

Particle Size  
( $\mu\text{m}$ )Thermally &  
Mechanically  
StableGood  
Laboratory  
PracticeBulk Density  
(g/L)

### Specifications

<b>Chemical Name:</b>	Silica 1-propanethiol; 3-Mercaptopropyl silica gel (Si-Thiol; Si-SH)
<b>Solid-Support Type:</b>	Silica
<b>Appearance:</b>	Free flowing off-white powder
<b>Application:</b>	Scavenger of electrophiles eg. alkyl-, benzyl- and allyl- halides, acid chlorides, isocyanates; Metal scavenger (e.g., Pd, Pt, Cu, Hg, Ag and Pb)
<b>Typical Conditions:</b>	Add 3-5 equiv. Stir for 15 min-2 h, then filter.
<b>Compatible Solvents:</b>	Methanol (MeOH), Dichloromethane (DCM), Acetonitrile (MeCN), Acetone, Ethyl Acetate (EtOAc), N,N-Dimethylformamide (DMF), Dimethylsulfoxide (DMSO)
<b>Storage:</b>	Cool (4 °C), dry location

Palladium-catalyzed reactions are very popular in organic synthesis. Some of the most widely practiced examples include Suzuki-Miyaura cross coupling reactions, Heck reactions, Buchwald aminations, Wacker-type oxidation, hydrogenation, allylation, reductive de-allylation and indole formation.

Despite the widespread use of these palladium-mediated reactions, removal of residual palladium during workup and product isolation remains a major problem. Reducing the palladium content to the low parts per million (ppm) levels, as is required for active pharmaceutical ingredients, is particularly challenging.

Biotage has developed a portfolio of scavenging products designed to remove these transition metal impurities. ISOLUTE® Si-Thiol was developed to address the need for a versatile metal scavenger that can be deployed in a multitude of different cases. It is the workhorse of the scavenging world and a first port of call for many screening and process applications.

ISOLUTE® Si-Thiol is the silica-bound equivalent of 1-propanethiol which is primarily used in the pharmaceutical industry as a metal scavenger for metals such as Pd, Pt, Cu, Hg, Ag and Pb but it can also be useful for covalent scavenging of alkyl, benzyl and allyl halides as well as a variety of other electrophiles including acid chlorides and isocyanates.

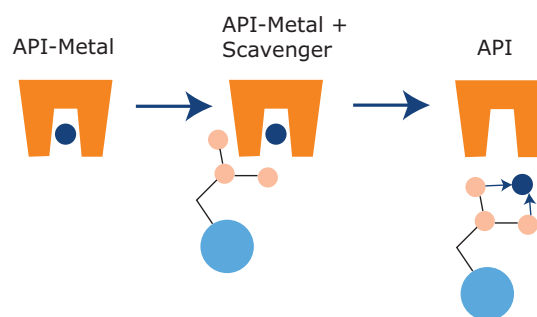
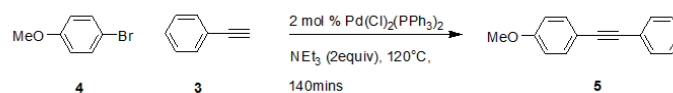


Figure 1. Metal Scavenging

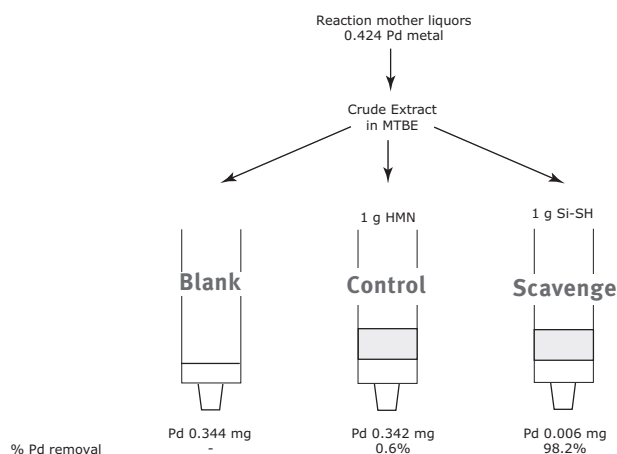
In 2006, Li reported a modified Palladium-catalyzed cross-coupling reaction under copper, amine and solvent free conditions. Due to the lack of other contaminating metal, we used this as a model reaction for demonstrating metal scavenging with Biotage Si-Thiol. In our example study, alkyne (5) was prepared in previously published yields and purities (Scheme 1), however the product was found to contain high levels of contaminating



Scheme 1: Model copper-free, amine-free Sonogashira reaction

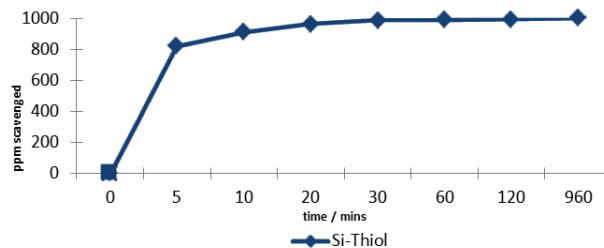
palladium. This initial reaction offered a starting point for to explore removal of Pd.

Simple treatments with Si-Thiol metal scavenger significantly reduced the palladium content (Figure 2).



**Figure 2.** The effect of Si-Thiol.

It is sometimes impractical to perform scavenging reactions for long periods of time so we have additionally considered the effect of time on scavenging using Si-Thiol (Figure 2).



**Figure 2.** Batch scavenging kinetics using 3 eq of Si-Thiol metal scavenger in a 1000ppm Pd solution of Pd(OAc)<sub>2</sub>, over time.

Based on previous optimization 3 eq of scavenger was used and scavenging measured over time. In the case of the Pd(OAc)<sub>2</sub>, Si-Thiol was able to remove the Pd from solution at 3 equiv. after 960 minutes however 98.6% and 99.1% of the palladium had been removed by the 30 and 60 minute marks, respectively.

## Ordering Information

Part Number	Quantity
9180-0010	10 g
9180-0025	25 g
9180-0100	100 g
9180-0500	500 g
9180-1000	1000 g



Biotage holds certification for both ISO9001 Quality Management and ISO14001 Environmental Management.

### EUROPE

Main Office: +46 18 565900  
Toll Free: +800 18 565710  
Fax: +46 18 591922  
Order Tel: +46 18 565710  
Order Fax: +46 18 565705  
order@biotage.com  
Support Tel: +46 18 56 59 11  
Support Fax: +46 18 56 57 11  
eu-1-pointsupport@biotage.com

### NORTH & LATIN AMERICA

Main Office: +1 704 654 4900  
Toll Free: +1 800 446 4752  
Fax: +1 704 654 4917  
Order Tel: +1 704 654 4900  
Order Fax: +1 434 296 8217  
ordermailbox@biotage.com  
Support Tel: +1 800 446 4752  
Outside US: +1 704 654 4900  
us-1-pointsupport@biotage.com

### JAPAN

Tel: +81 3 5627 3123  
Fax: +81 3 5627 3121  
jp\_order@biotage.com  
jp-1-pointsupport@biotage.com

### CHINA

Tel: +86 21 2898 6655  
Fax: +86 21 2898 6153  
cn\_order@biotage.com  
cn-1-pointsupport@biotage.com

To locate a distributor, please visit our website [www.biotage.com](http://www.biotage.com)

Part Number: PPS374.V.1

© 2016 Biotage. All rights reserved. No material may be reproduced or published without the written permission of Biotage. Information in this document is subject to change without notice and does not represent any commitment from Biotage. E&OE. A list of all trademarks owned by Biotage AB is available at [www.biotage.com/legal](http://www.biotage.com/legal). Other product and company names mentioned herein may be trademarks or registered trademarks and/or service marks of their respective owners, and are used only for explanation and to the owners' benefit, without intent to infringe.